

7,410 SF INDUSTRIAL PROPERTY FOR **SUBLEASE**

5965 Peachtree Corners East  
Unit A-1  
Norcross, GA



**SPILLER INDUSTRIAL**  
Real Estate Advisors, LLC



**PROPERTY HIGHLIGHTS**

**Total SF:** 7,410 SF

**Office:** 1,444 +/- SF

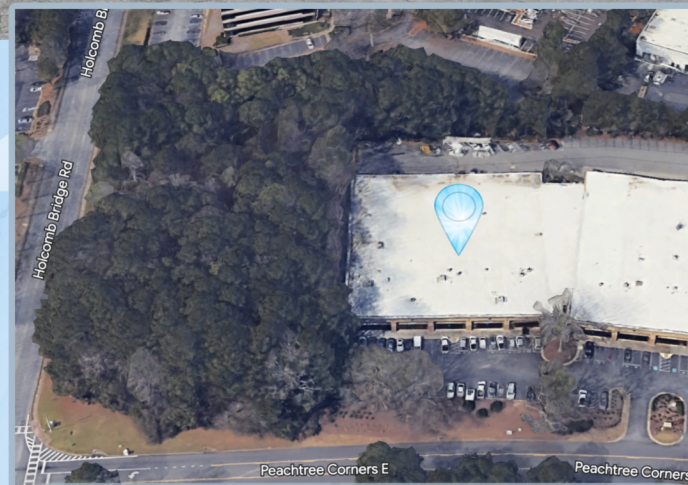
**Term:** 18 Months  
(through 10/31/24)

**Ceiling Height:** 18' Clear

**Loading:** 1 Dock-High  
8.5' x 10'  
Edge of dock leveler

1 Drive-In  
12' x 14'

**Additional:** End Cap Unit  
LED lighting  
2 Skylights



**LOCATION OVERVIEW**

Located near Holcomb Bridge Road with quick access to Peachtree Industrial Boulevard, I-85 and I-285.

**RICK SPILLER, SIOR**

404.771.3673  SIOR

[rick@spillerindustrial.com](mailto:rick@spillerindustrial.com)

**ROSS SPILLER**

678.983.8445

[ross@spillerindustrial.com](mailto:ross@spillerindustrial.com)

**STEVE RICHARDSON**

703.303.2705

[steve@spillerindustrial.com](mailto:steve@spillerindustrial.com)

[www.spillerindustrial.com](http://www.spillerindustrial.com)

Every effort has been made to provide accurate information, but no liability is assumed for errors or omissions.

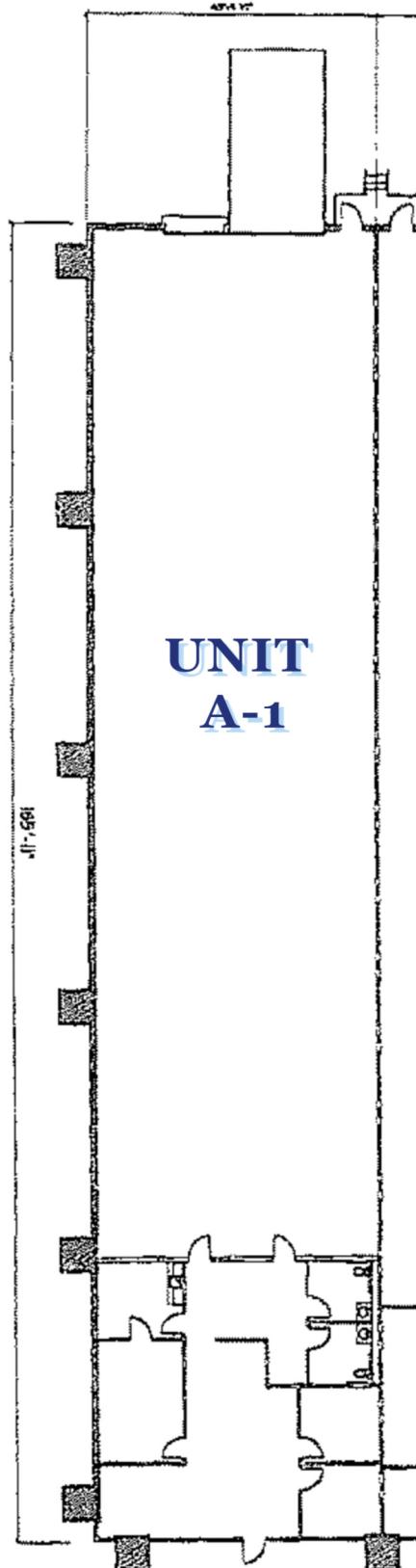
7,410 SF INDUSTRIAL PROPERTY FOR **SUBLEASE**

5965 Peachtree Corners East  
Unit A-1  
Norcross, GA



**SPILLER INDUSTRIAL**  
Real Estate Advisors, LLC

**FLOOR PLAN**



**CONTACT US**

**STEVE RICHARDSON**  
703.303.2705  
steve@spillerindustrial.com

**ROSS SPILLER**  
678.983.8445  
ross@spillerindustrial.com

**RICK SPILLER, SIOR**  
404.771.3673  SIOR  
rick@spillerindustrial.com